



**Other features for reviewing recorded blood pressure data:**

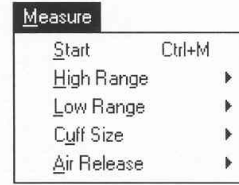
- Trend Display – Go to “Options” and select “Show Trend Window” in order to review the histogram display of previously recorded blood pressure data.
- Go to “Record” in Main Menu and select “Personal Info” – this will allow you to input and record or edit general personal information.
- Go to “Record” in Main Menu and select “Record Table” – this will display a tabulated display of previously recorded blood pressure measurement data.

File Edit User Measure Trend Record Options Window Help

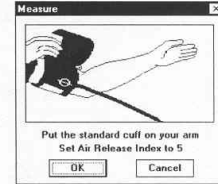
- Trend**
  - Retrieve the measurement Waveform Display: **B**Retrieve
- Record**
  - Display or edit personal medical information: **P**ersonal Info
  - Display blood pressure measurements in tabular form: **R**ecord Table
- Options**
  - Select the communications port to be used by the DynaPulse. Find the communications port used by the DynaPulse: **C**om Port, **C**om Check
  - Reset the unit due to environmental changes: **Z**ero Reset
  - Displays the Trend window. Display the Tool window: **S**how Trend Window, **S**how Tool Window
- Window**
  - Overlap all open displays. Tile all open displays. Arrange displayed icons. Close all measurement windows. List all open displays: **C**ascade (Shift+F5), **T**ile (Shift+F4), **A**rrange Icons, **C**lose All
  - U**ser (patient) List
- Help**
  - On-Line help. Medical information. Version information: **B**asic Usage, **M**edical Facts, **A**bout DynaPulse F1

**Taking A Blood Pressure Measurement**

Select the START option from the MEASURE menu.

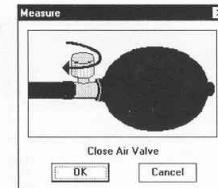


Put the cuff on the arm and press ENTER, or click OK. For further information regarding correct cuff placement, see *Using The Cuff*. Adjust the Air Release Index (the knob on the unit) to the appropriate value.



*In this example, a blood pressure reading is taken using the default ranges.*

Close the release valve of the pressure bulb by turning the valve knob clockwise. After the valve is shut tightly, press the ENTER key or click OK.



**The Measurement Display**

USER NAME: ctw    CURRENT USER DIRECTORY: c:\dpwin    ARTERIAL PULSE: 78    AT CURSOR POSITION: 14:01    CURRENT TIME AND DATE: 02/20/95 11:20:44

DynaPulse - [Measurement 02/12/95 14:01]

File Edit User Measure Trend Record Options Window Help

Name: ctw    c:\dpwin    02/20/95 11:20:44

132 mmHg Systolic    96 Mean    Date: 02/12/95

79 mmHg Diastolic    71 Pulse    Time: 14:01

MEASUREMENT TIME SCALE (IN SECONDS): 0.00 0.24 0.48 0.72 0.96

DATE AND TIME OF MEASUREMENT: 02/20/95 11:20:44

SYSTOLIC, MEAN DIASTOLIC INDICATORS (LEFT TO RIGHT) OF POSITIONS IN PRESSURE WAVE

CUFF PRESSURE SCALE

CUFF PRESSURE AT CURRENT CURSOR POSITION: 78 mmHg

**NOTE:** The measurement display is intended for use as an analytical tool. Any diagnosis must be performed by a qualified medical practitioner.

**Note for DP-200M owner and existing/registered users:**

- When you open the DP-200M software, a “User List” window will display with default user as “Guest”. (Please note: blood pressure measurements CANNOT be saved for a Guest!
- Find your name from the User List and double click to select. Perform blood pressure measurement as described above.